

## THE GREYSTONE

[Link to suite pricing](#)



Core Urban Inc.  
Develop Different

# ABOUT THE GREYSTONE

---

The Greystone is an **8-storey, 70,000 sq.ft** rental apartment building featuring **56 units**, a soon-to-be 5,000 sq.ft grocery store on the ground floor, underground parking, a gym, and a rooftop patio.

The design of the building features a classical banded stone facade, arched windows with pronounced surrounds, balconies, and an ornate balustrade.



It's been designed with an urban focus that ensures a maximum density without diminishing the existing streetscape, while complimenting the character of the surrounding Corktown and Durand neighbourhoods.

With over 8 layouts, the units at the Greystone have unique features and highlights.

Details were not overlooked in the interior design process. Each unit has a dishwasher, washer/dryer, oven, microwave, central air, and stylish finishes. Choose between views of the escarpment or views of Durand; Juliette windows or balconies; and sunrise or sunset.



# ABOUT CORE URBAN INC.

---

Our Slogan is to **Develop Different**. We believe that developing properties is about building community and creating unique spaces.

In the context of Hamilton, Ontario, this means revitalizing the downtowncore, renewing forgotten landmarks and playing an active role in re-establishing our city as a vibrant place to live and work. By transforming its urbanlandscape, we are helping to transform our city.



**Core Urban Inc.**  
Develop Different



The Empire Times



18 Augusta



Witton Lofts



Templar Flats





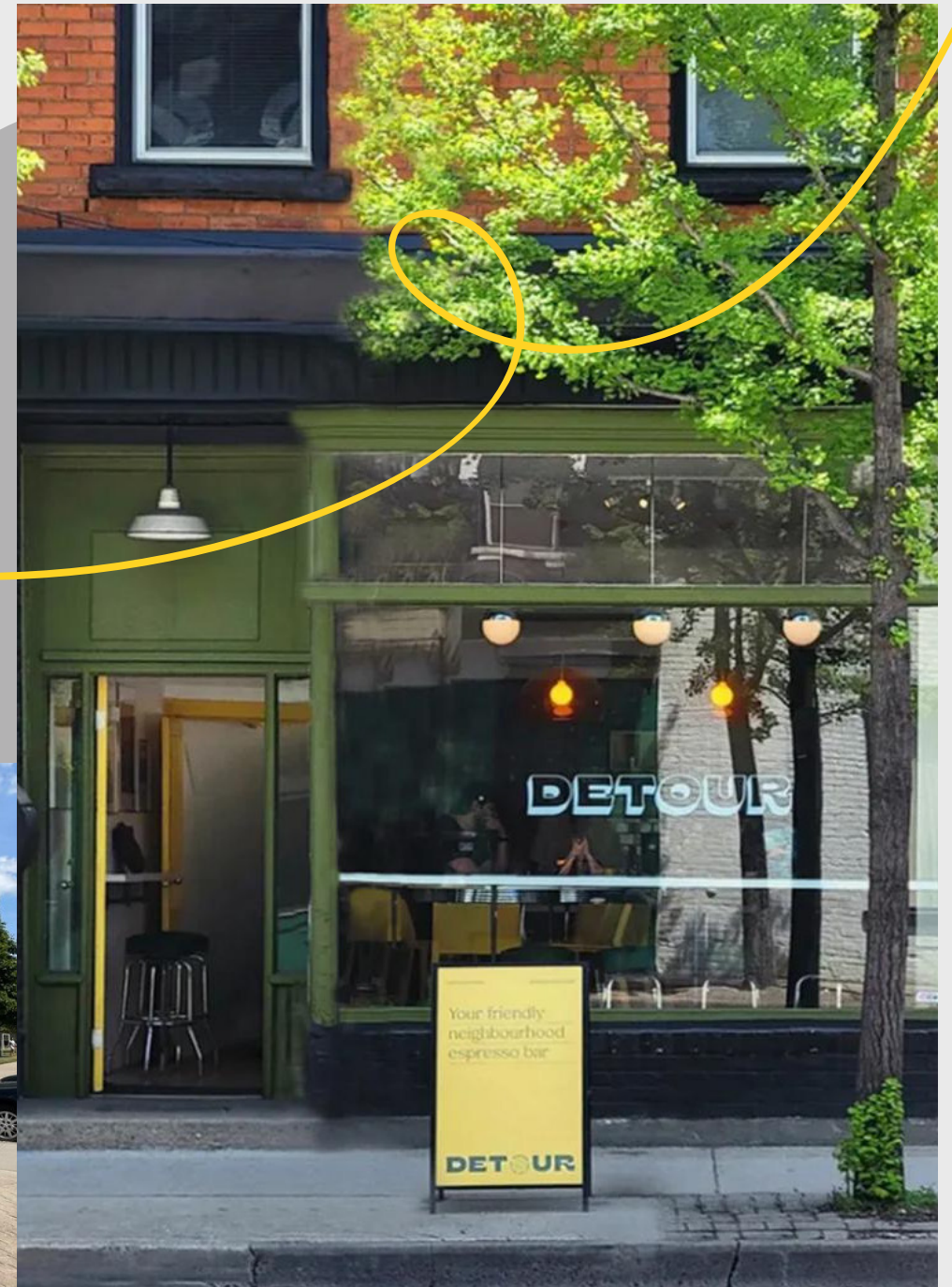
The Greystone is located on James Street South in the Corktown neighbourhood.

The Corktown neighbourhood is named for the many Irish immigrants who called it home when Hamilton was first settling. It continues to thrive as a diverse neighbourhood, with a rich tapestry of housing stock, landmarks, and landscapes.

# LOCATION: JAMES STREET SOUTH

Some notable destinations in Corktown include: Corktown Park, Shamrock Park, The GO Station, The Downtown YMCA, St. Joseph's Hospital, proximity to the escarpment, schools, daycares, and many places to eat, shop, and drink.

Corktown is not only neighbours with Durand, but also the Stinson neighbourhood, and the Downtown Core. Just minutes North and you're in the heart of James Street North, Gore Park, and King William Street.





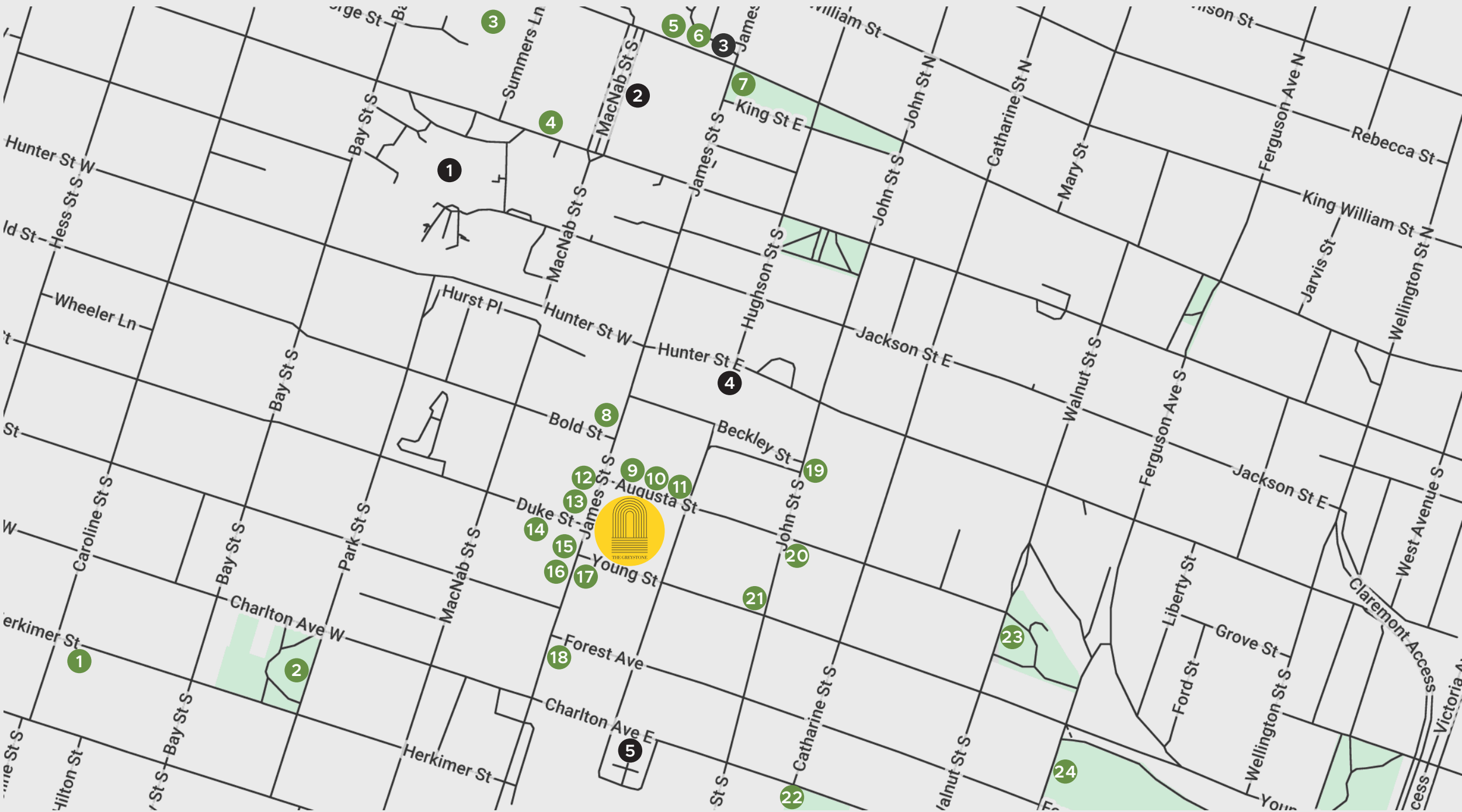
CITY  
AMENITIES

169 James  
Street South,  
Hamilton

95  
WALK SCORE

86  
TRANSIT SCORE

81  
BIKE SCORE



DINING, SHOPPING & RECREATION

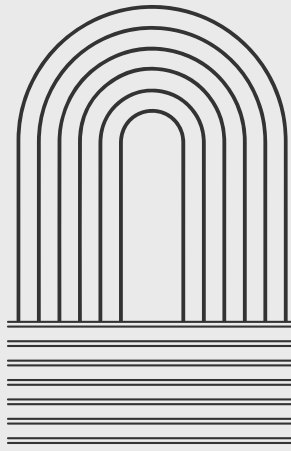
- 1. Shoppers Drug Mart
- 2. Durand Park
- 3. Art Gallery of Hamilton
- 4. Hamilton Convention Centre/Concert Hall
- 5. LCBO
- 6. Landmark Cinemas at Jackson Square
- 7. Gore Park
- 8. Cozy Sushi

- 9. B-Side Social
- 10. The Ship
- 11. The Judge
- 12. Goldies Fast Food
- 13. Odds Bar
- 14. One Duke Tavern
- 15. La Piazza Allegra
- 16. Big Bee Food Mart

- 17. Flora Pizzeria
- 18. Wass Ethiopian Restarant
- 19. Lionshead Pub
- 20. Detour Cafe
- 21. Bon Temps
- 22. Woolverton Park
- 23. Shamrock Park
- 24. Corktown Park

TRANSPORTATION & SERVICES

- 1. Hamilton City Hall
- 2. MacNab Street Bus Terminal
- 3. Jackson Square
- 4. Hamilton GO Centre (Bus & Train)
- 5. St. Joseph's Hospital



THE GREYSTONE

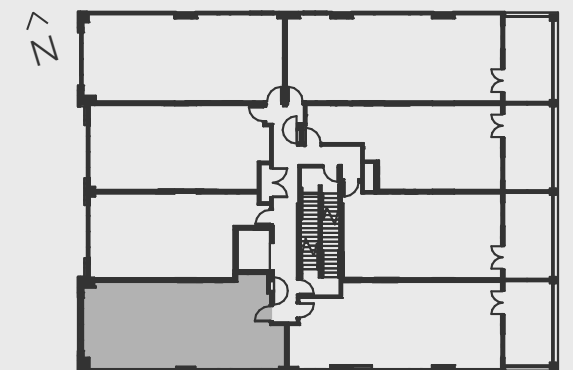
SUITE 201

1 BEDROOM

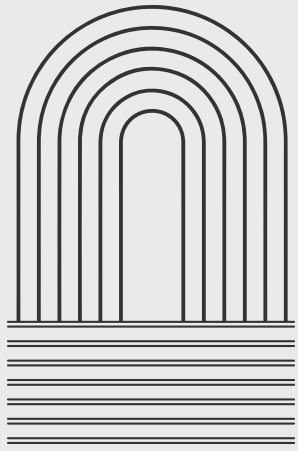
808 SQ.FT



Core Urban Inc.  
Develop Different



FLOOR 2

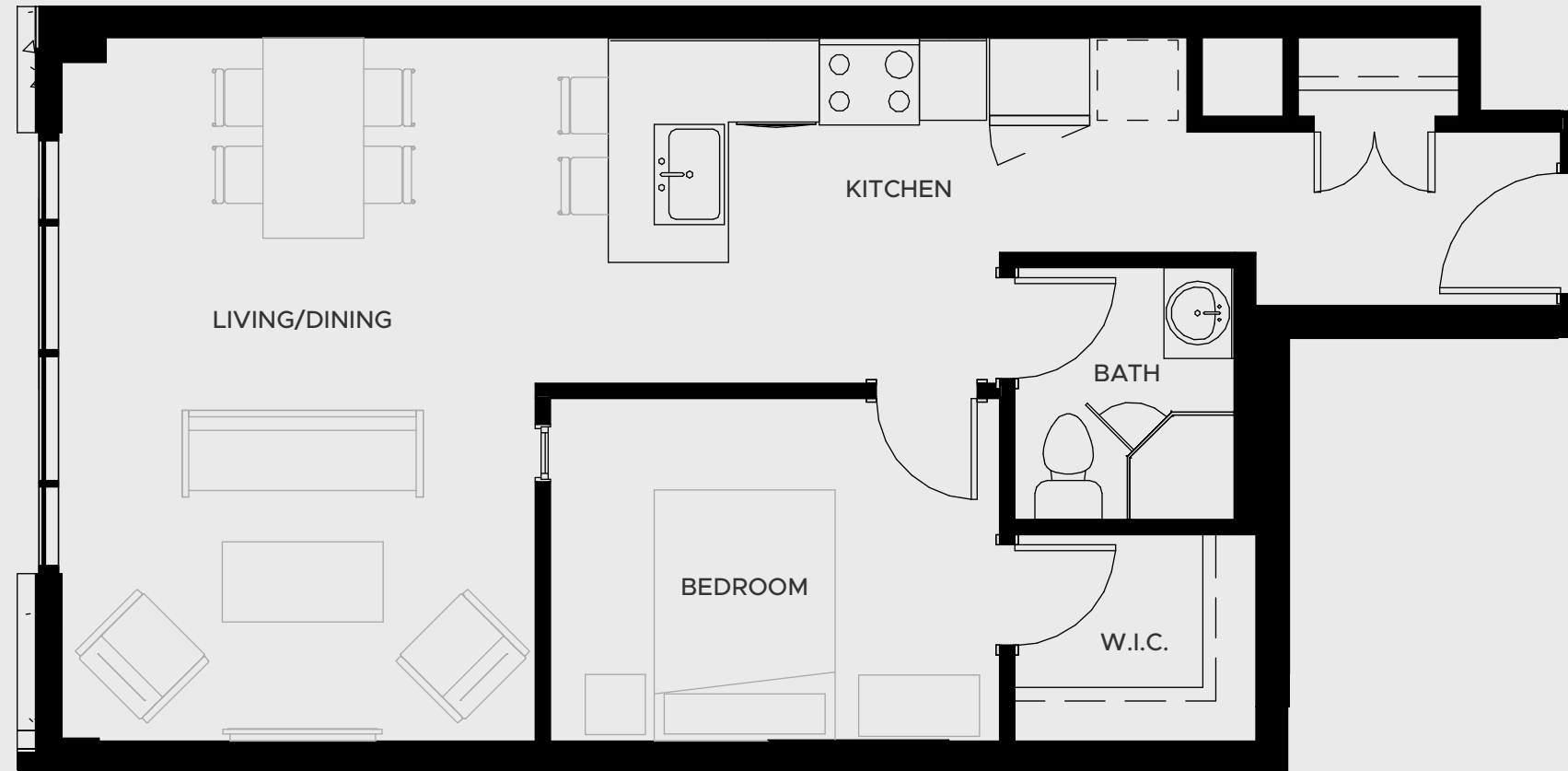


THE GREYSTONE

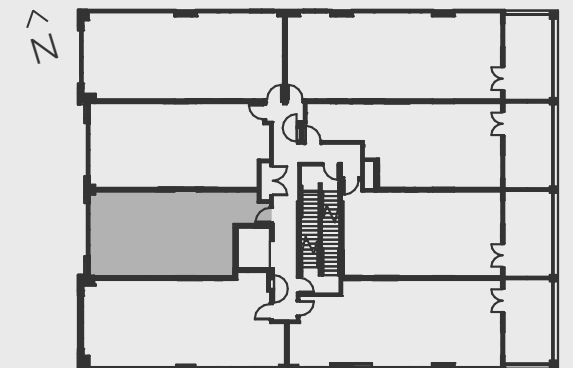
SUITE 202

1 BEDROOM

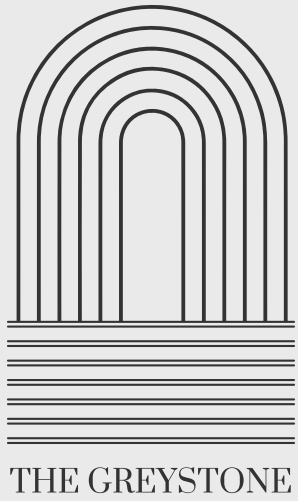
624 SQ.FT



Core Urban Inc.  
Develop Different



FLOOR 2



SUITE 203

1 BEDROOM

689 SQ.FT

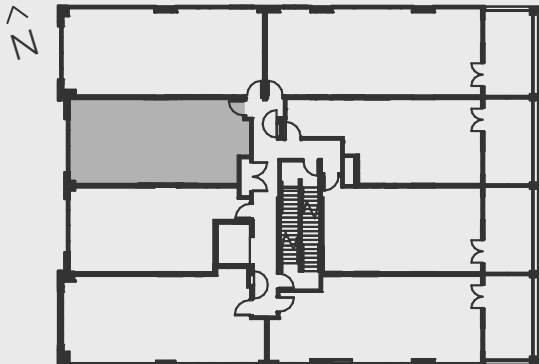


 [Link to suite photos](#)

 [Link to virtual tour](#)

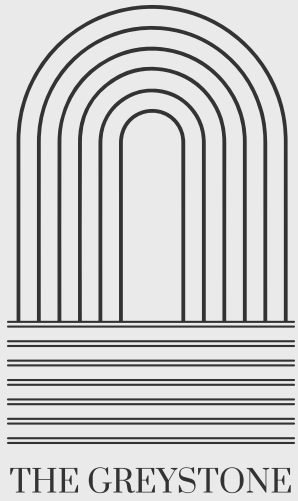


Core Urban Inc.  
Develop Different



FLOOR 2

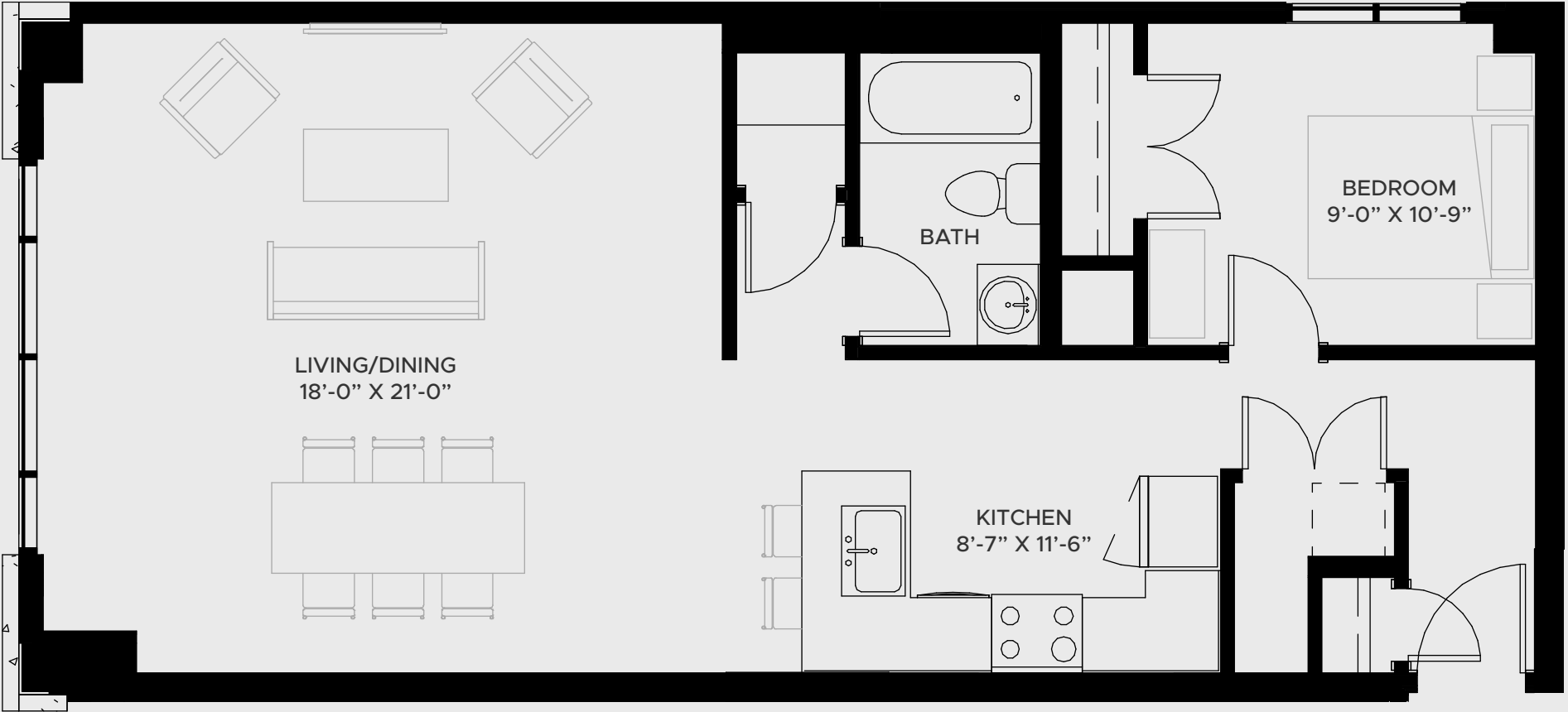




SUITE 204

1 BEDROOM

808 SQ.FT

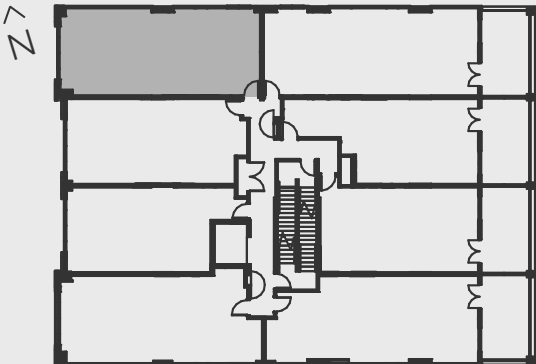


 [Link to suite photos](#)

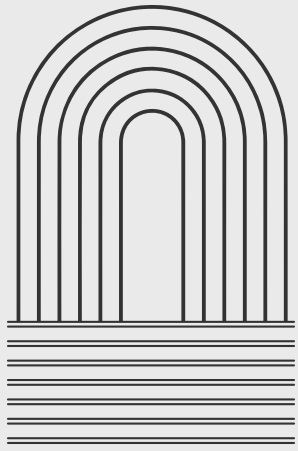
 [Link to virtual tour](#)



Core Urban Inc.  
Develop Different



FLOOR 2

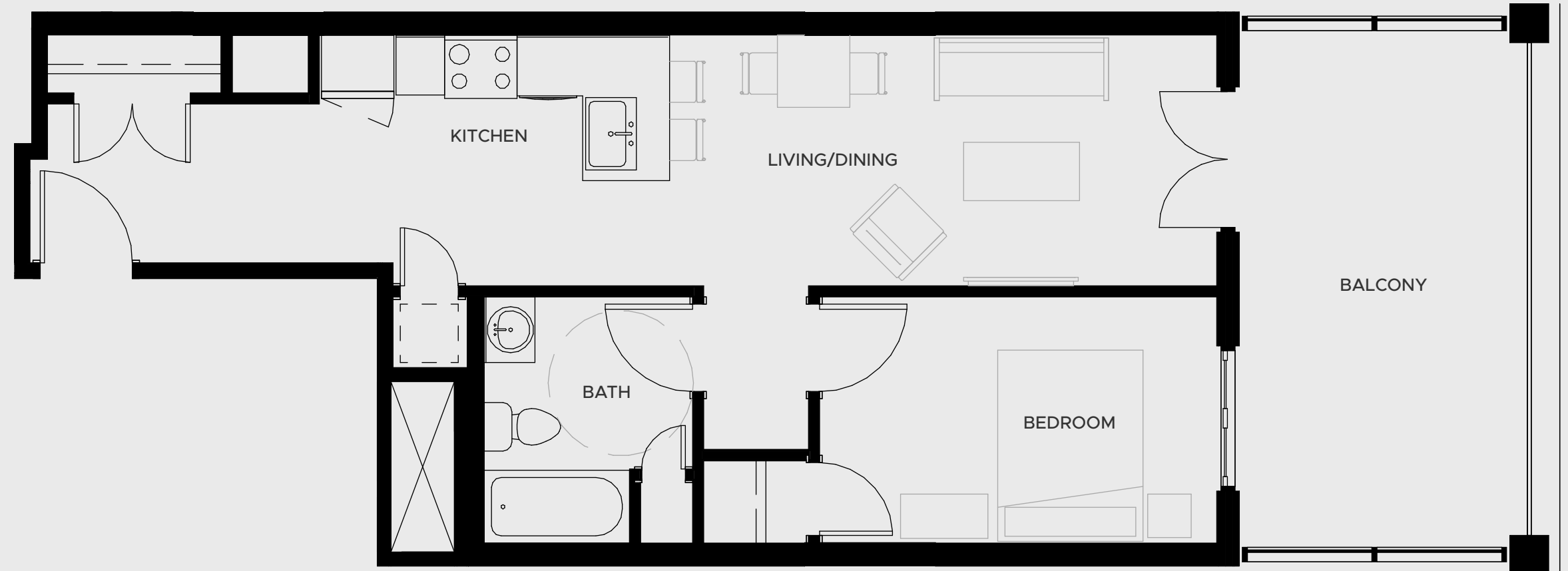


THE GREYSTONE

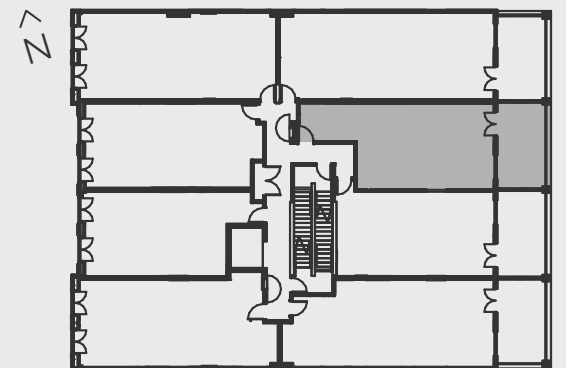
# SUITE 206, 306, 406

**1 BEDROOM**  
(BARRIER-FREE)

635 SQ.FT

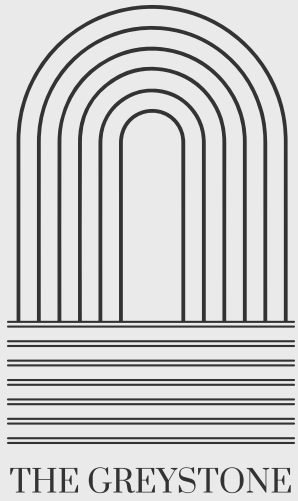


Core Urban Inc.  
Develop Different



FLOORS 2-4





SUITE 301,  
401, 501, 601,  
701, 801

**2 BEDROOM  
+DEN**  
(BARRIER-FREE)

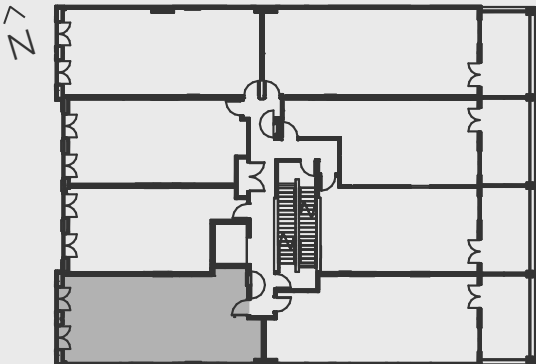
808 SQ.FT



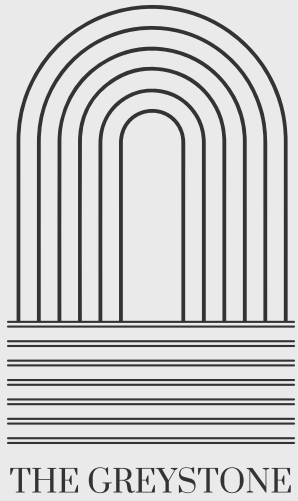
Core Urban Inc.  
Develop Different

 [Link to suite photos](#)

 [Link to virtual tour](#)



FLOORS 3-8



SUITE 302,  
402, 502,  
602, 702, 802

1 BEDROOM  
+ DEN

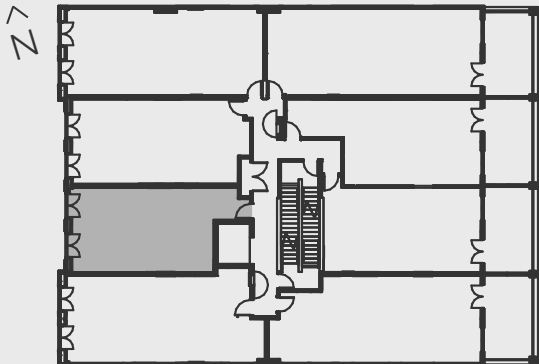
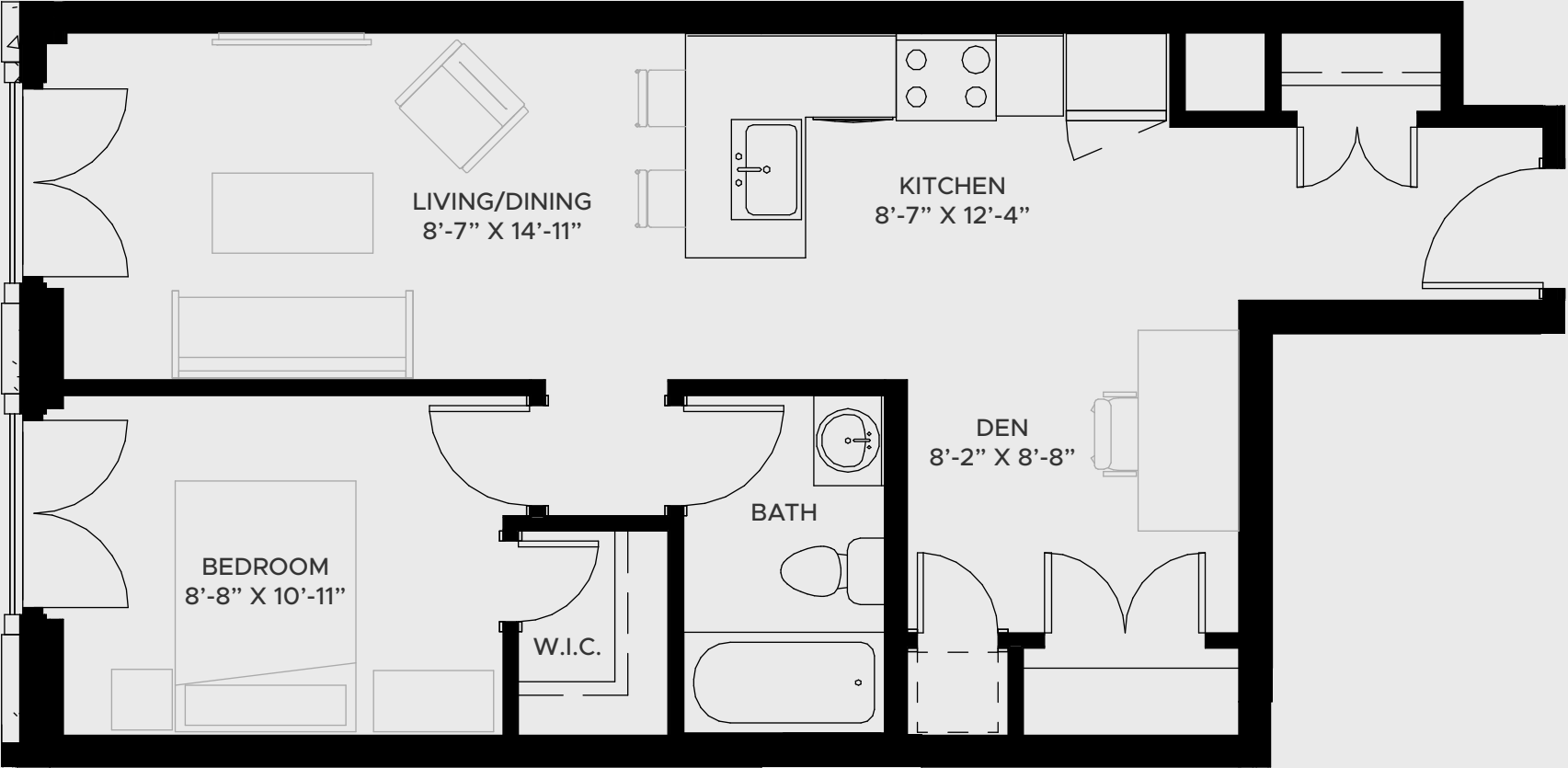
624 SQ.FT



Core Urban Inc.  
Develop Different

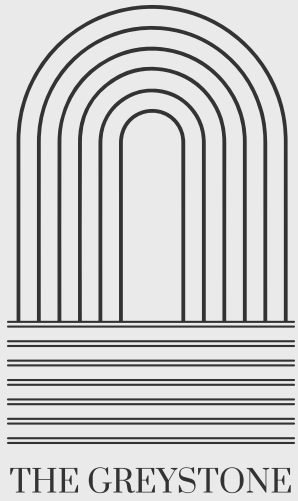
 [Link to suite photos](#)

 [Link to virtual tour](#)



FLOORS 3-8





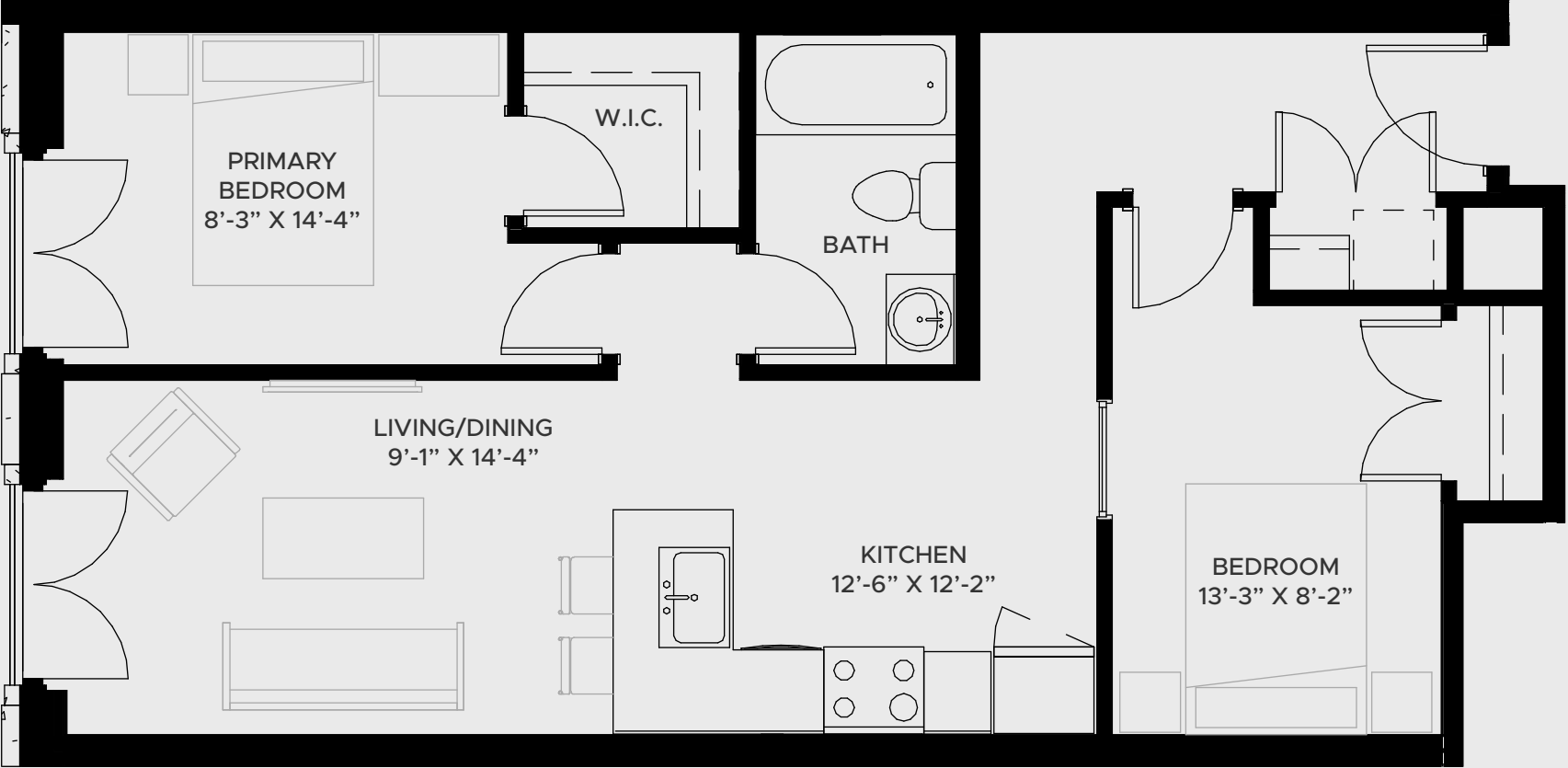
SUITE 303,  
403, 503,  
603, 703, 803

2 BEDROOM

689 SQ.FT



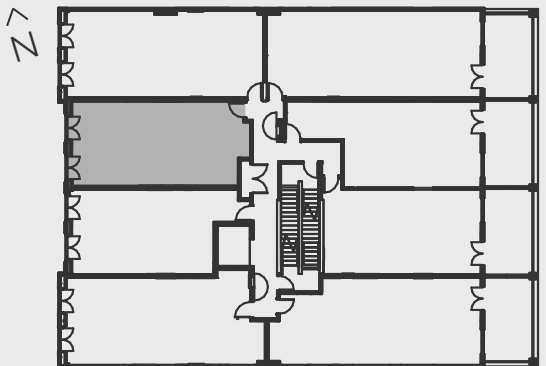
Core Urban Inc.  
Develop Different



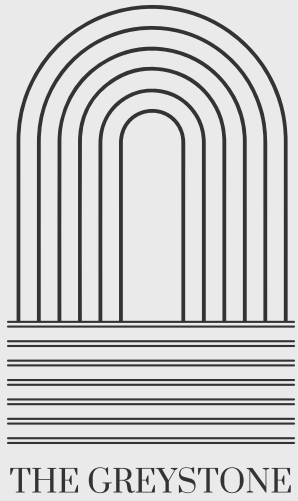
Link to suite photos



Link to virtual tour



FLOORS 3-8



SUITE 304,  
404, 504,  
604, 704, 804

2 BEDROOM  
+ DEN

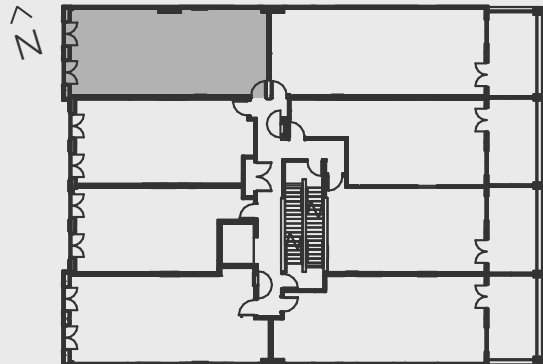
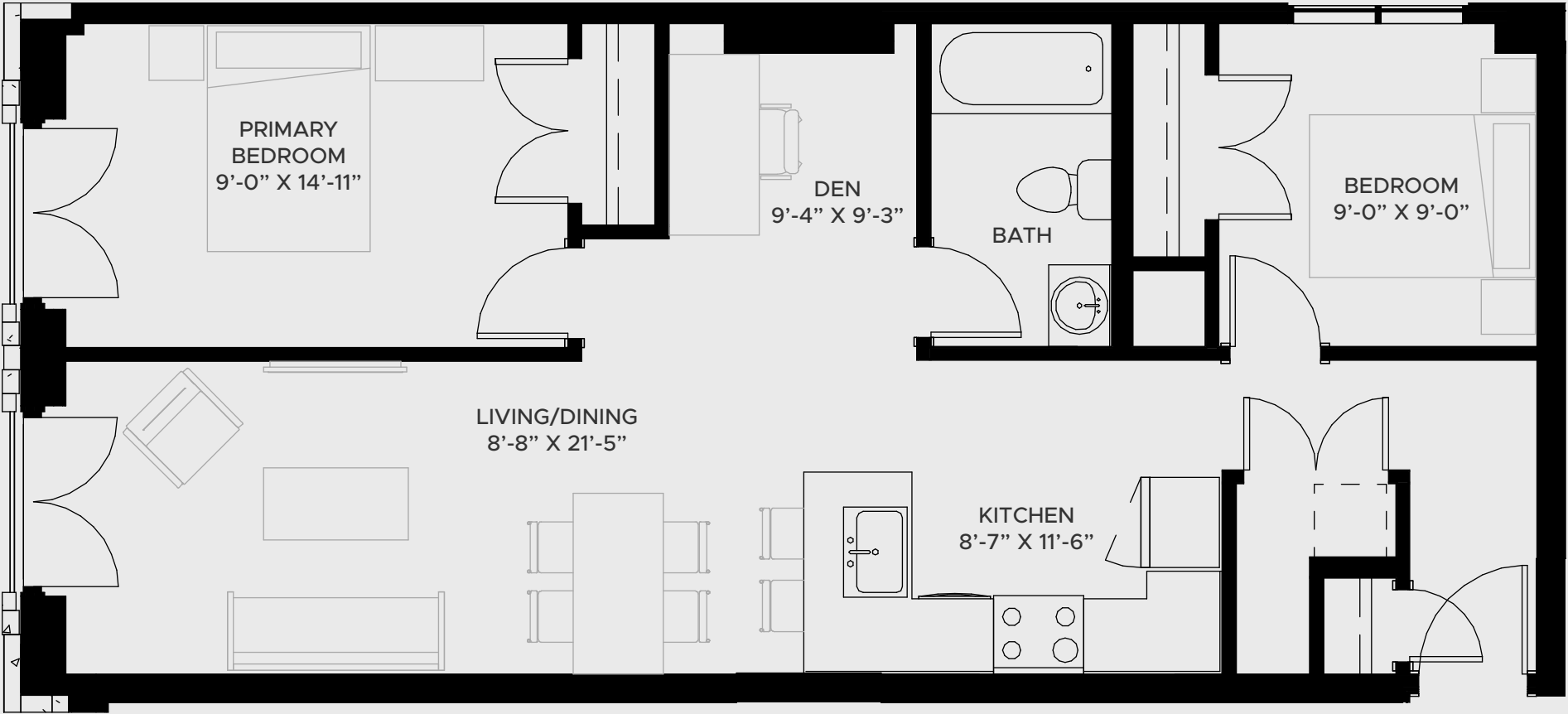
808 SQ.FT



Core Urban Inc.  
Develop Different

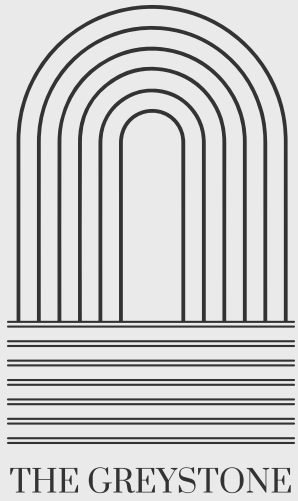
 [Link to suite photos](#)

 [Link to virtual tour](#)



FLOORS 3-8






SUITE 205,  
305, 405, 505,  
605, 705, 805


2 BEDROOM

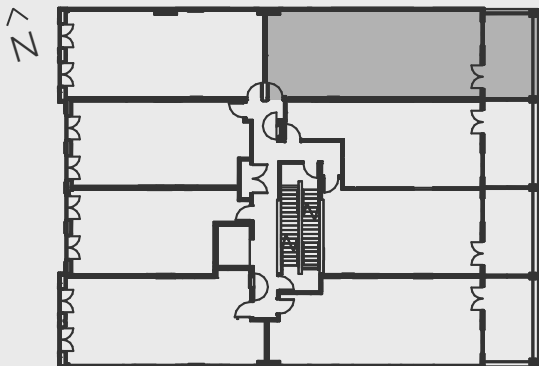
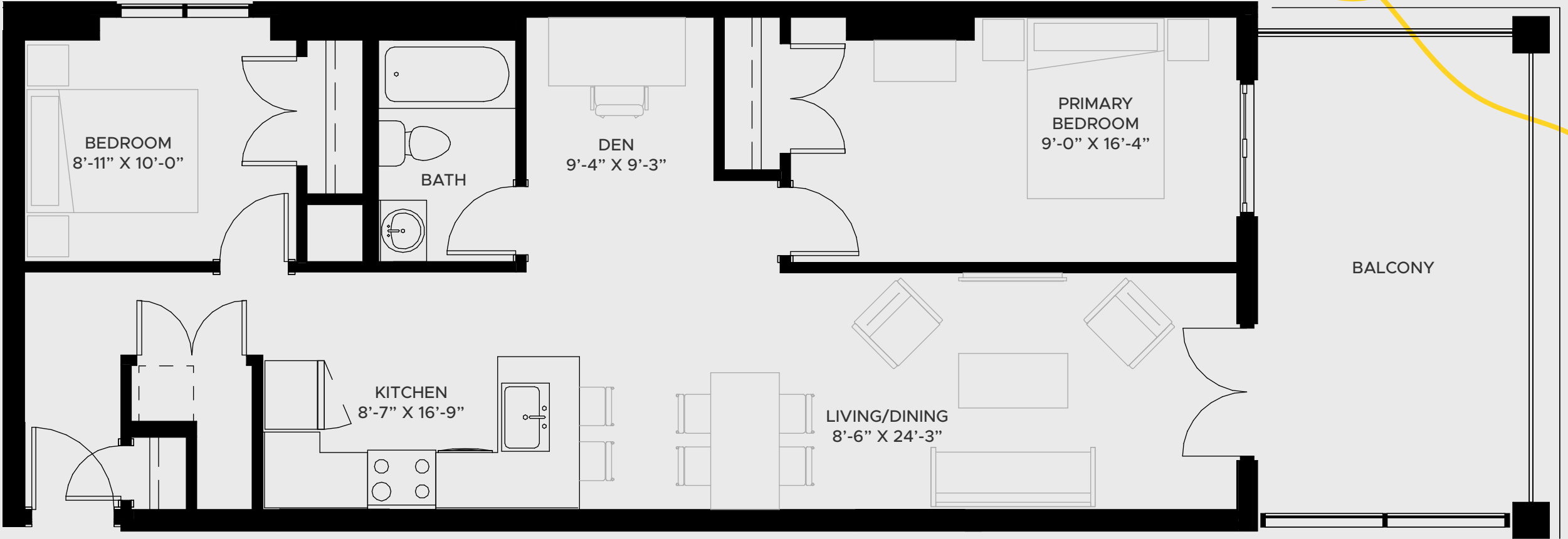
861 SQ.FT



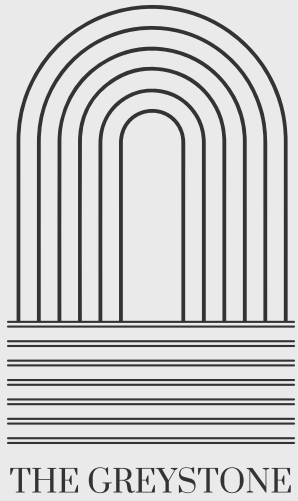
Core Urban Inc.  
Develop Different

 [Link to suite photos](#)

 [Link to virtual tour](#)



FLOORS 2-8



SUITE 506,  
606, 706, 806

1 BEDROOM

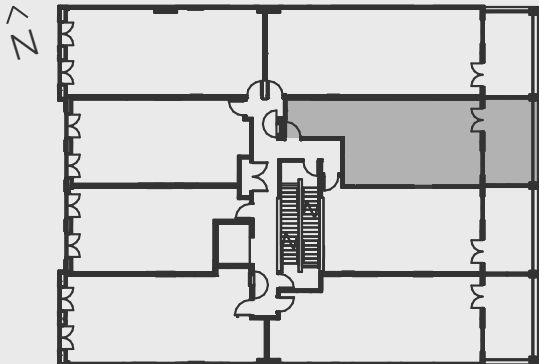
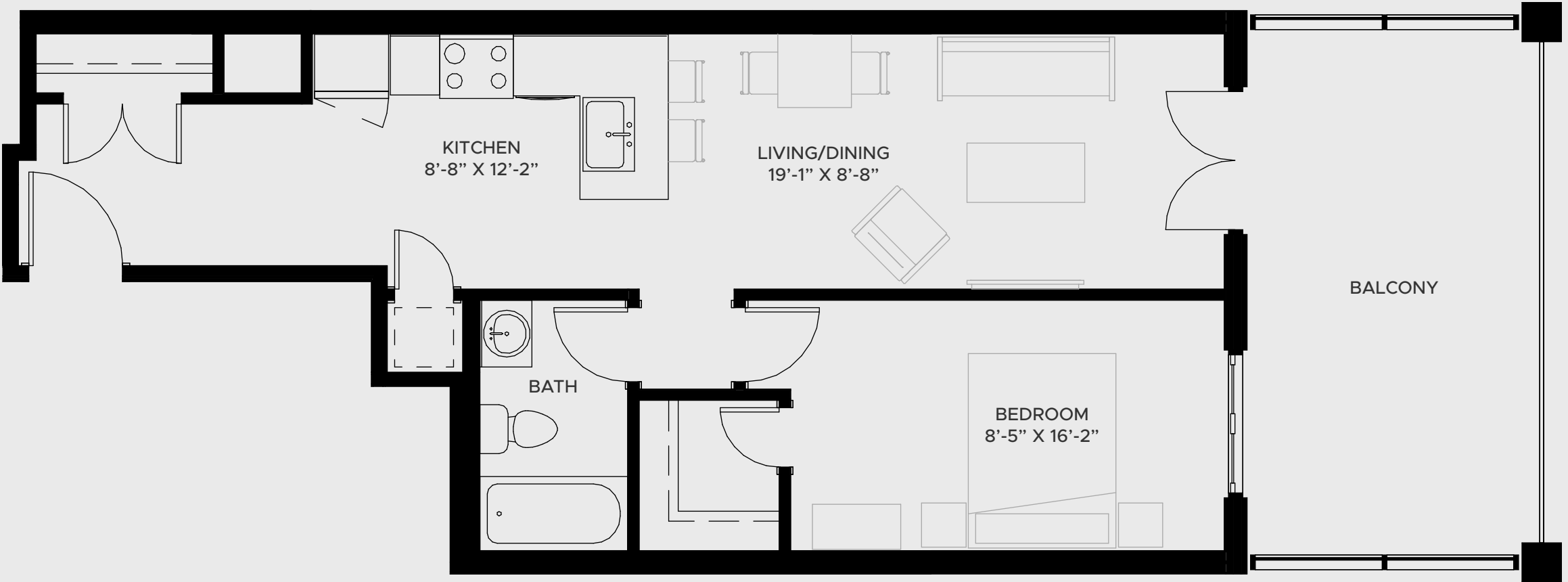
635 SQ.FT



Core Urban Inc.  
Develop Different

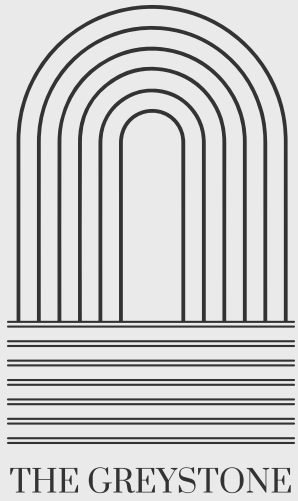
 [Link to suite photos](#)

 [Link to virtual tour](#)



FLOORS 5-8





SUITE 207,  
307, 407, 507,  
607, 707, 807

1 BEDROOM

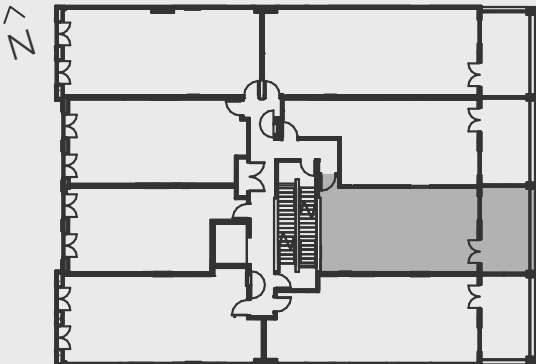
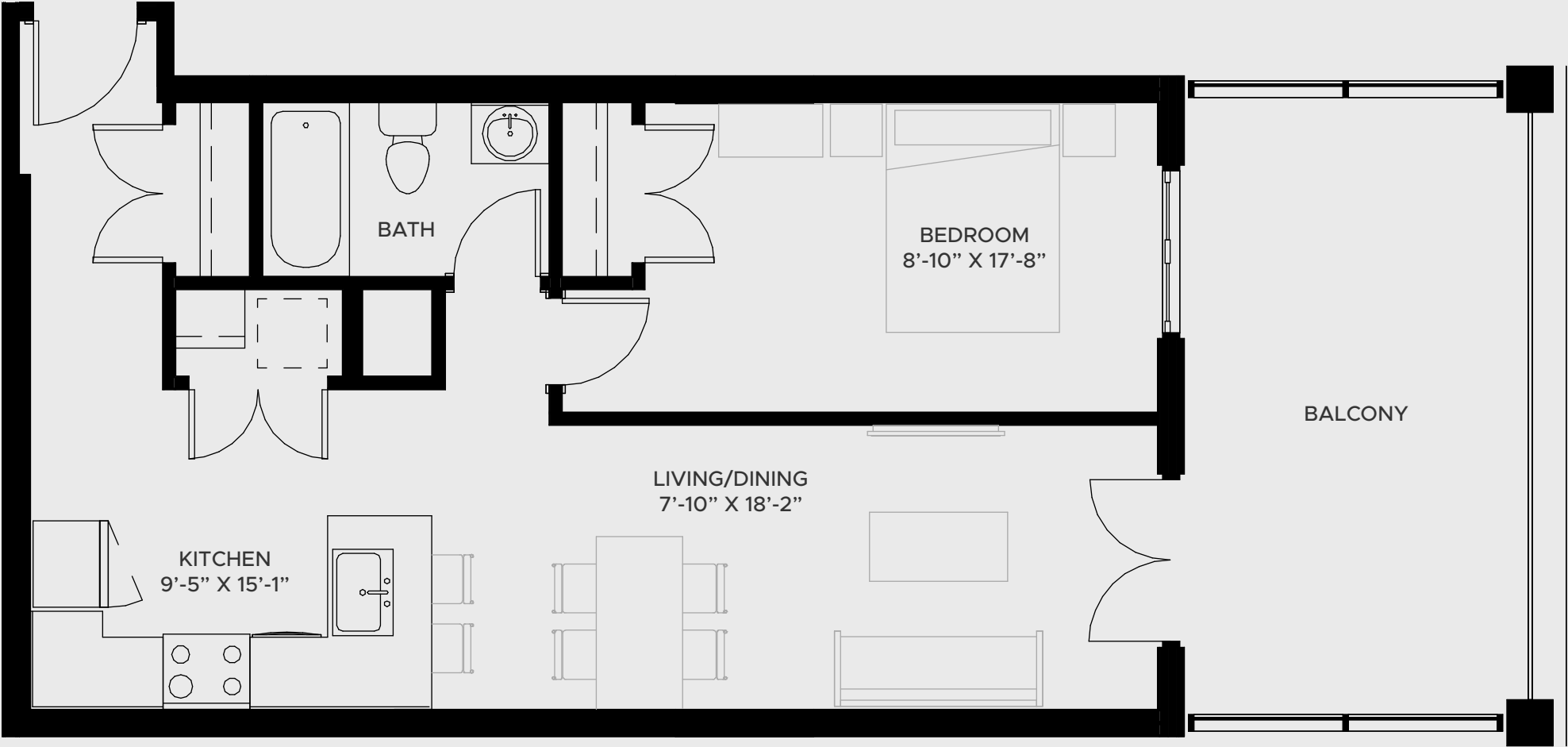
635 SQ.FT



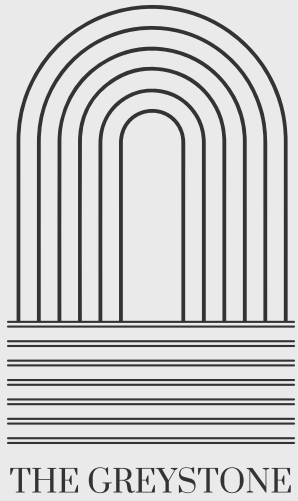
Core Urban Inc.  
Develop Different

 [Link to suite photos](#)

 [Link to virtual tour](#)



FLOORS 2-8



SUITE 208,  
308, 408, 508,  
608, 708, 808

2 BEDROOM  
+ DEN

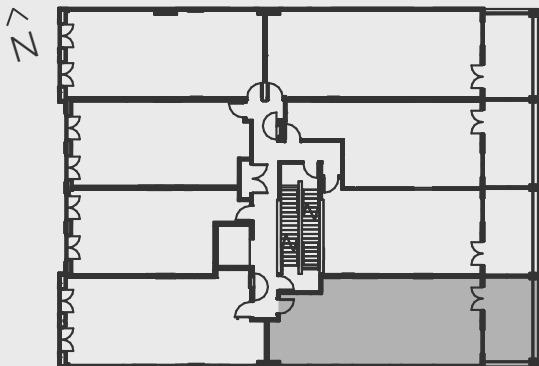
808 SQ.FT



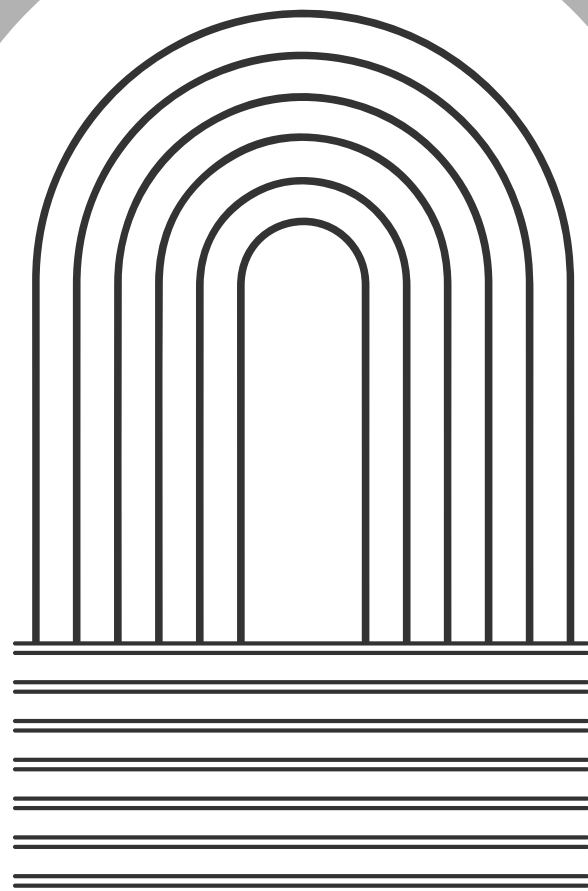
Core Urban Inc.  
Develop Different

 [Link to suite photos](#)

 [Link to virtual tour](#)



FLOORS 2-8



# THE GREYSTONE



Core Urban Inc.  
Develop Different